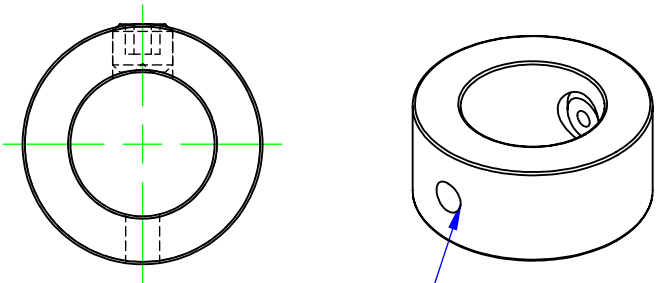
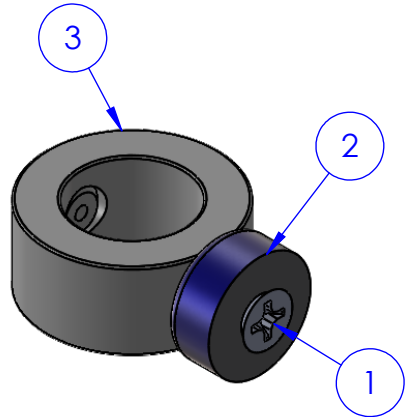
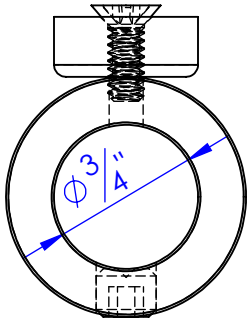
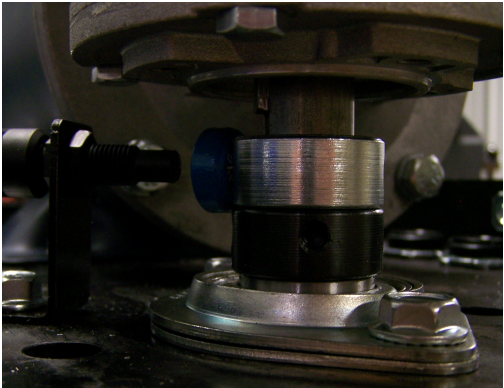
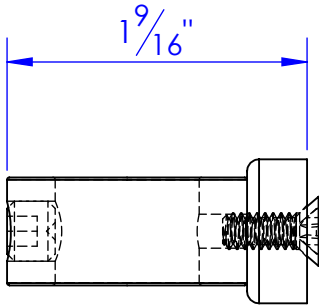
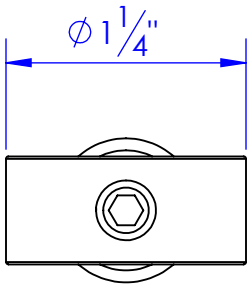


ITEM NO.	PART NUMBER	DESCRIPTION	QTY.
1	BO-10-24x.5 FHCS	BOLT FLAT HEAD 10-24x1/2	1
2	HD-MAG .75 HIENERG	MAGNET 3/4 HIGH ENERGY	1
3	MI-MA-1570421	SET SCREW COLLAR 3/4" I.D. with TAPED HOLE	1

	REVISIONS		
REV.	DESCRIPTION	DATE	APPROVED
A	INITIAL RELEASE	8/8/2014	



DRILL 5/32 HOLE
TAP HOLE WITH 10NC24 TAP



PROPRIETARY AND CONFIDENTIAL
THE INFORMATION CONTAINED IN THIS
DRAWING IS THE SOLE PROPERTY OF TRIPLE
C INC. ANY REPRODUCTION IN PART OR
AS A WHOLE WITHOUT THE WRITTEN
PERMISSION OF TRIPLE C INC. IS PROHIBITED.

DIMENSIONS ARE IN INCHES TOLERANCES: FRACTIONAL ±1/16 ANGULAR: MACH ±1 BEND ± TWO PLACE DECIMAL ±010 THREE PLACE DECIMAL ±005			NAME	DATE
		DRAWN	HEATH	8/8/2014
		PART #	MI-MA EL MAGNET	
		ASM #	COLLAR	
		COMMENTS:		
MATERIAL		ELECTRIC FEEDER SENCOR MAGNET HOLDER		
DO NOT SCALE DRAWING				

P.O. BOX 248, SABETHA, KS 66534				
<div>TRIPLE C INC.</div>				
SIZE A	DWG. NO. 30-1415			REV. A
SCALE:1:1	WEIGHT: 0.02		SHEET 1 OF 1	